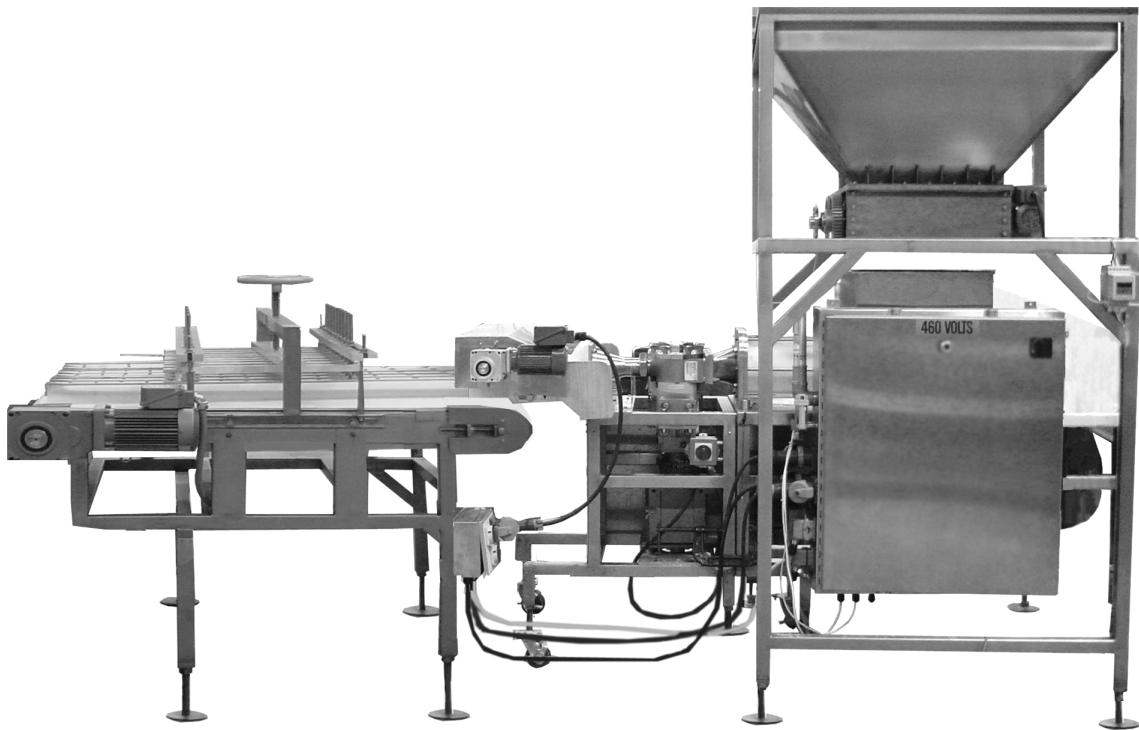


DOUGH CHUNKER FEEDER

Model ADC Available in 500, 800, and 1000 Lbs.

Dough hopper chunker feeder for flour tortillas is designed and made by Casa Herrera in the US to get a precise dough feeding to our extrusion type dough divider as needed.



SHOWN WITH DOUGH DIVIDER / ROUNDER

- Stainless Steel frame & hopper.
- Teflon coated square tubing reinforced under top flange.
- Discharge gate with tri-blade rotating cutters, Teflon coated.
- Heavy duty bearings.
- Inverter drive with shaft mounted gear motor for smooth cutting.
- NEMA 4X (watertight) control panel.
- All machine wiring will be NEMA 4X for wash down service.
- Dough level sensor to maintain the correct flow and extruding pressure of dough.